

SANUKI CITY

TSUDA MAP 津田



3 CumiUmi (Aki Suisan)
 You can buy delicatessen dishes made with squid, octopus and fish at this store, which is located in an area overlooking a panorama of Tsuda Bay. In addition to ajillo and grilled squid made with local ingredients, various drinks are also available.
 1402-23 Tsudamachi Tsuda, Sanuki City Tel.0879-49-2681
 Open Hours: 11:00-16:00 Closures: Irregular



4 Sweets Maker Miyoshi Shogetsudo
 A long-running sweets maker, with a 100-year history. The seasonal-exclusive "age-mochi" fried rice cakes are a popular item, sold in Tokyo and other locations, as well as in Kagawa Prefecture. In addition to Japanese sweets, you can also buy western confectionery, and season-exclusive croissants are sold in June and July.
 1157-3 Tsudamachi Tsuda, Sanuki City Tel.0879-42-2231
 Open Hours: 7:00-18:00 Closures: Sundays



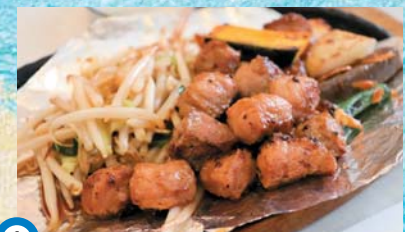
5 Aki Shoten
 Recommended products include fish slow-pickled in Sanuki miso, and handmade kamaboko fish cakes. These items are also popular selections in the "hometown tax" program for Sanuki City.
 116 Tsudamachi Tsuda, Sanuki City Tel.0879-42-2026
 Open Hours: 8:00-16:00 Closures: Wednesdays, Sundays
 Check website for online ordering, etc.
<https://aki-shoten.co.jp/kodawari.html>



6 Toriyoshi
 Meatballs, one of the soul foods of the Tsuda area, are in such demand that customers often buy ten per person. The homemade sauce is moreish and delicious. In addition, the classic yakitori and chicken on-the-bone are also popular.
 112-31 Tsudamachi Tsuda, Sanuki City
 Tel.0879-42-4546
 Open Hours: 10:00-19:00 Closures: Mondays



11 Ookawa Oasis
 Alongside National Route 11, close to the border with Higashikagawa City, Ookawa Oasis has long been a familiar rest area for drivers. From the interior, you can gaze out over the Seto Inland Sea, and the restaurant offers a plentiful menu with the Oasis Gozen (set meal), parfaits, and more. Sundry goods, vegetables, and sweets are also sold here.
 2326-12 Tsudamachi Tsuruwa, Sanuki City
 Tel.0879-42-2193
 Open Hours: 8:30-19:30 Closures: Mondays



1 Teppanyaki Restaurant Yoshihara
 Hand-selected wagyu beef, as well as seafood, vegetables, and stir-fried udon noodles, are all popular dishes here in the relaxed atmosphere of this restaurant, which has been a beloved local spot for many years.
 2892-18 Tsudamachi Tsuda, Sanuki City
 Tel.0879-42-3631
 Open Hours: 11:00-15:00/17:00-21:15
 Closures: Tuesdays
 (Open if Tue. is a national holiday; Irregular closures on Mon.)



8 Michishio
 At Michishio, where the Seto Inland Sea unfurls before your eyes, every dish on the menu, made with carefully-selected ingredients, is outstanding. Offers a diverse menu, starting with the Michishio teishoku (set meal), which comes with both tempura and sashimi. With plentiful seating, large groups are welcome!
 2920-6 Tsudamachi Tsuruwa, Sanuki City
 Tel.0879-42-2244
 Open Hours: 11:30-14:00/17:00-23:00
 Closures: Wednesdays



9 Grilled Meat Kuutaru
 The carefully-selected meat is of excellent quality. All seating is in private booths, so you can relax and enjoy yourself. The lunch menu is also recommended.
 1274-1 Tsudamachi Tsuruwa, Sanuki City
 Tel.0879-42-1477
 Open Hours: 11:30-14:00/17:00-22:00
 (Sundays & Holidays: ~21:30)
 Closures: Wednesdays



12 Miho
 The satisfying menu includes the Miho teishoku (set meal) and sashimi teishoku. The deep-fried chicken, so popular that it has long-term fans, is also a recommended dish.
 2285-1 Tsudamachi Tsuruwa, Sanuki City
 Tel.0879-42-5325
 Open Hours: 11:00-14:00/17:00-20:00
 Closures: Tuesdays
 (Next day if Tue. is a national holiday), December 31



2 Sanuki Udon Haryu
 The springy handmade noodles and fried-to-order tempura are popular at this udon restaurant with counter-only seating. Beloved by locals, as well as many fans who come from afar.
 2161-2 Tsudamachi Tsuda, Sanuki City
 Tel.0879-42-2766
 Open Hours: 10:00-14:00
 Closures: Fridays



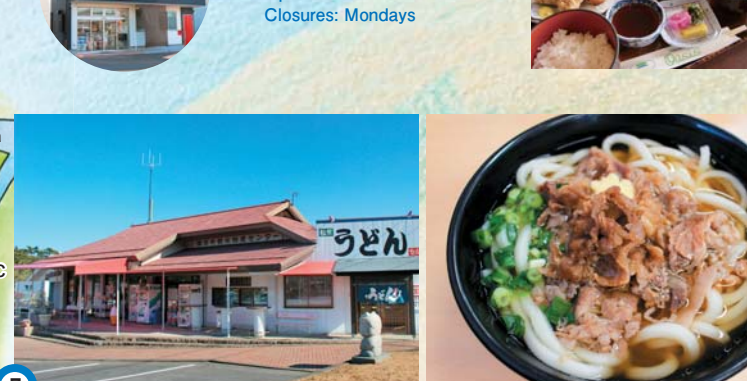
15 Nogi
 A manufacturer and vendor of health-friendly sweets, free from allergens including eggs, dairy and wheat as well as the use of synthetic seasonings or preservatives, and made with domestic rice flour. With cute product packaging, these make perfect gifts.
 1467-3 Tsudamachi Tsuda, Sanuki City
 Open Hours: 9:00-17:30
 Closures: Saturdays, Sundays, national holidays
<https://www.nogi-info.com>



14 Yururito
 A cafe on a high plateau overlooking Tsuda Bay. Relax and enjoy coffee and meals while browsing the book collection assembled by the book-loving owner.
 418-2 Tsudamachi Tsuda, Sanuki City
 Tel.0879-49-1515
 Open Hours: 10:00-17:00
 Closures: Fridays, Saturdays, year-end & New Year's holidays



10 Ooshio Suisan
 With products including dried young sardines, whitebait, wakame seaweed, and shrimp, Ooshio Suisan handles every step from fishing and processing to sales, resulting in outstanding freshness. Various products are sold directly next to the processing area. Raw and pot-boiled whitebait, exclusive to the whitebait fishing season, can be enjoyed in plentiful amounts in shirasu-don (whitebait bowls), which are so popular that they often immediately sell out.
 2175-4 Tsudamachi Tsuruwa, Sanuki City
 Tel.0879-42-5105
 Open Hours: 9:00-17:00
 Closures: December 31-January 3 (Other closures: Irregular)
<https://www.ooshio-suisan.co.jp/>
 *Service can be provided during closures, so please inquire in advance.



7 Roadside Station Tsuda no Matsubara
 Sanuki City's specialty products and souvenirs are the main focus of the items sold here. Various vegetables and seasonal-exclusive products are also available depending on the time of year. In addition, the scenic spot Tsuda no Matsubara is a short walk from the Roadside Station. The nearby Matsubara Udon offers a wide-ranging menu, and is busy and lively at lunchtime. The meat udon is particularly popular.
 103-3 Tsudamachi Tsuda, Sanuki City Tel.0879-42-5520
 Open Hours: 9:00-17:00 (Matsubara Udon: 10:30-15:00)
 Closures: January 1



13 Tsuda no Matsubara Service Area
 From this service area, located on a high plateau, you can gaze out over the Seto Inland Sea. Accessible from regular roads. Inside, in addition to specialty products of Kagawa Prefecture, visitors can enjoy Sanuki udon, eggs from Silk chickens from Matsumoto Farm, and other regional products. Outside, ideal snack foods such as the popular Asami Shoten's fried fish paste and Nagata Kofukudo's tofu donuts and dumplings are available.
 (Inbound) Towards Tokushima Tel.0879-42-1777
 (Outbound) Towards Takamatsu Tel.0879-42-0880
 *Separate parking lot for access from regular roads (Free parking)
 Open Hours: 7:00-22:00 Closures: None

Inquiries
General Incorporated Association Sanuki City Tourism Association
 5385-8 Shido, Sanuki City, Kagawa Prefecture TEL.087-894-1601
 Sanuki City Tourism Association Website <https://sanuki-kanko.jp/>

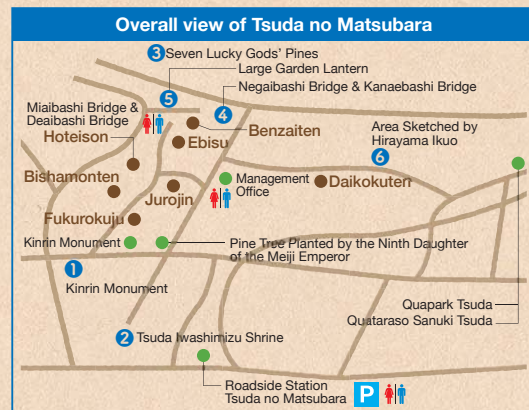
Sanuki City Mascot Character Sakki
 Sanuki City Tourism Association Official Facebook
 Sanuki City Tourism Association Official Instagram

*Closures and open hours may be subject to change. Please inquire in advance. Issued March 2022


Tsuda no Matsubara (Tsuda Pine Grove)

Deep Blue Sea, White Sand And a Lush Green Pine Grove


A famous beauty spot that has been selected as one of "Japan's top 100 white sand beaches with green pines" and also one of "Japan's 100 most beautiful beaches". A cluster of pine trees, including a 600-year-old pine with exposed roots, stretches out across one kilometer, and the beach, renowned as one of the leading bathing resorts in the prefecture, is popular with visitors every summer. In addition, there are opportunities to experience dragnet fishing and beach volleyball, as well as an annual summer festival.




- 1 Kinrin Monument**




One stone tablet is a record of correspondence by Aki Eichu, a wealthy merchant of Tsuda village in the Edo period, to the Confucian scholar Minagawa Kien of Kyoto, telling of the splendor of Tsuda no Matsubara, and imploring Minagawa to spread word of its beauty all around the country. The other tablet shows a representation of the beautiful scenery by Fujisawa Nangaku of Takamatsu Domain.
- 2 Tsuda Iwashimizu Shrine**




Relocated to the present site in 1600, it is said that large-scale tree-planting within this shrine's grounds by parishioners was the origin of Tsuda no Matsubara. Make sure to take a look at the Komainu (shrine guardian dog statues), which are Japanese wolves.
- 3 Seven Lucky Gods' Pines**




Within the pine grove, there are seven grand pine trees that are venerated with Shinto ceremonial ropes. Among these, the "Ebisu Pine" is famed for its association with the woodblock print artist Munakata Shiko.
- 4 Negaibashi Bridge & Kanaebashi Bridge**



Two bridges across the Umekawa River, which flows through the pine grove. The bridge on the outbound path is named "Negaibashi" (Wishing Bridge) and the bridge on the return path is "Kanaebashi" (Wish-granted Bridge). If you make a wish as you cross the bridge, and pray for it to be granted as you return, maybe your wish will come true!?
- 5 Large Garden Lantern**



Stone materials, which had been due to be erected as a marker for light cargo vessels entering the Umekawa River mouth during the late Edo period, were excavated in the grounds of the shrine in 1924, and were repaired and constructed into this lantern.
- 6 Area Sketched by Hirayama Ikuo**



Hirayama Ikuo, a traditional Nihonga artist known for his many paintings of the Seto Inland Sea scenery and Buddhist artworks, visited this area to sketch the view. His depiction of the pine grove is the original picture used for the motif on the drop curtain at Kagawa Prefectural Culture Hall.

Interact with Dolphins at this "Satoumi" Surrounded by Mountains and Sea Dolphin Center



Enjoy Sanuki City! Fun and Fascinating Activity Spots

Activity

Offers a rich variety of programs, including opportunities to swim with dolphins, to pet and interact with dolphins, to give them food, and to experience sign communication with them as a dolphin trainer. This hugely popular facility is enjoyed by both adults and children.

Japan Dolphin Center
Address: 1520-130 Tsudamachi Tsuruwa, Sanuki City
Tel.0879-23-7623
Open Hours: 10:00-17:00
(-18:00 in summer season)
Closures: None (Apr.-Sept.),
Wednesdays (Oct.-Mar.)



Explore Sanuki's Sea with a Sea Kayak Experience

Explore the gentle waters of Tsuda Bay! Rediscover the wonder of the ocean by venturing out to normally-inaccessible cliff walls and uninhabited islands, joining dolphin-watching tours, and more. (Reservation required)



Quataraso Sanuki Tsuda
Address: 24-2 Tsudamachi Tsuruwa, Sanuki City
Tel.0879-42-5888
Time: 9:00- (Approx. 3 hours)
Closures: Tuesdays



Quapark Tsuda Bicycle Rental

Explore the town with a sightseeing rental bicycle. How would you like to feel the breeze around you as you travel around Sanuki City?



Rental Hours: 9:00-18:00
Rental Office: Quapark Tsuda
Rental Fees: 1,000 yen for 3 hours,
1,500 yen for 6 hours, 2,000 yen for 1 day
※Available to all, not only overnight guests of Quapark Tsuda.
※Number of cycles is limited,
so advance inquiries are recommended.
Inquiries: Quapark Tsuda 0879-42-2521

Pottery Experience "Toutoudo"

Anyone can take part, even with zero knowledge of pottery! In this easygoing pottery experience, staff provide gentle and careful instruction to help make your chosen ceramic item. Prior reservation required.

Applications: Need to apply 2-3 days in advance.
Group classes of up to 5 people OK
Activity Fee: 2,500 yen (includes materials)
Inquiries: 2724-1 Tsudamachi Tsuda, Sanuki City
Tel.0879-42-5363



Hot Springs



Quataraso Sanuki Tsuda

Offers a hot spring course packed with variety, as well as a fitness course to refresh body and mind.

Address: 24-2 Tsudamachi Tsuruwa, Sanuki City
Tel.0879-42-5888
<https://q-t.anabuki-enter.jp/>

Accommodation

Relax both your body and mind, surrounded by nature



Quapark Tsuda

Ocean views from every room. Make yourself comfortable as you gaze out at the Seto Inland Sea, unfurling before your eyes. Overnight guests can use the adjacent hot spring "Quataraso Sanuki Tsuda" free of charge.

Address: Within Tsuda no Matsubara, Tsudamachi Tsuda, Sanuki City
Tel.0879-42-2521
<https://q-p.anabuki-enter.jp/>



R-Villa

An exclusive-use villa, limited to one party per day. Enjoy watching the ever-changing Seto Inland Sea from the huge uncovered windows.

Address: 2837-1 Tsudamachi Tsuruwa, Sanuki City
Tel.080-2987-7828
<https://www.r-villa.jp/>

Tabiyado Nitta

Address: 2734-24 Tsudamachi Tsuda, Sanuki City
Tel.0879-42-2535

Bungoya Ryokan

Address: 1080-5 Tsudamachi Tsuda, Sanuki City
Tel.0879-42-2266

Minshuku Kitayama-senoshitaso

Address: 3806 Tsudamachi Tsuda, Sanuki City
Tel.0879-42-1830

Montpellier Auberge

Address: 3311-1 Tsudamachi Tsuda, Sanuki City
Tel.0879-42-2508

ACCESS | Traveling to Tsuda Area in Sanuki City

Access by Car

Take the Takamatsu Expressway and leave at Tsuda-Sangawa IC or Tsuda-Higashi IC

Access by Rail

Take the JR Kotoku Line from JR Takamatsu Station, and get off at Sanuki-Tsuda Station

Access by Bus

Take the Sanuki City Community Bus from JR Shido Station, and get off at "JR Sanuki-Tsuda Station"



Time Required at Facilities

Time Required 60-120 mins

Dolphin Center
Roadside Station
Tsuda no Matsubara
Quataraso Sanuki Tsuda
Kinrin Monument, etc.
Tsuda Iwashimizu Shrine
Tsuda no Matsubara

10 mins
by car

10 mins
by car

Takamatsu
Expressway
Tsuda-Sangawa IC

※Visiting times and journey times are provided as a rough guideline.

Public Transport

Sanuki City Community Bus(Sanuki City Urban Development Division) Tel.087-894-1113
Taxi (Okawa Kotsu) Tel.0879-42-1516